

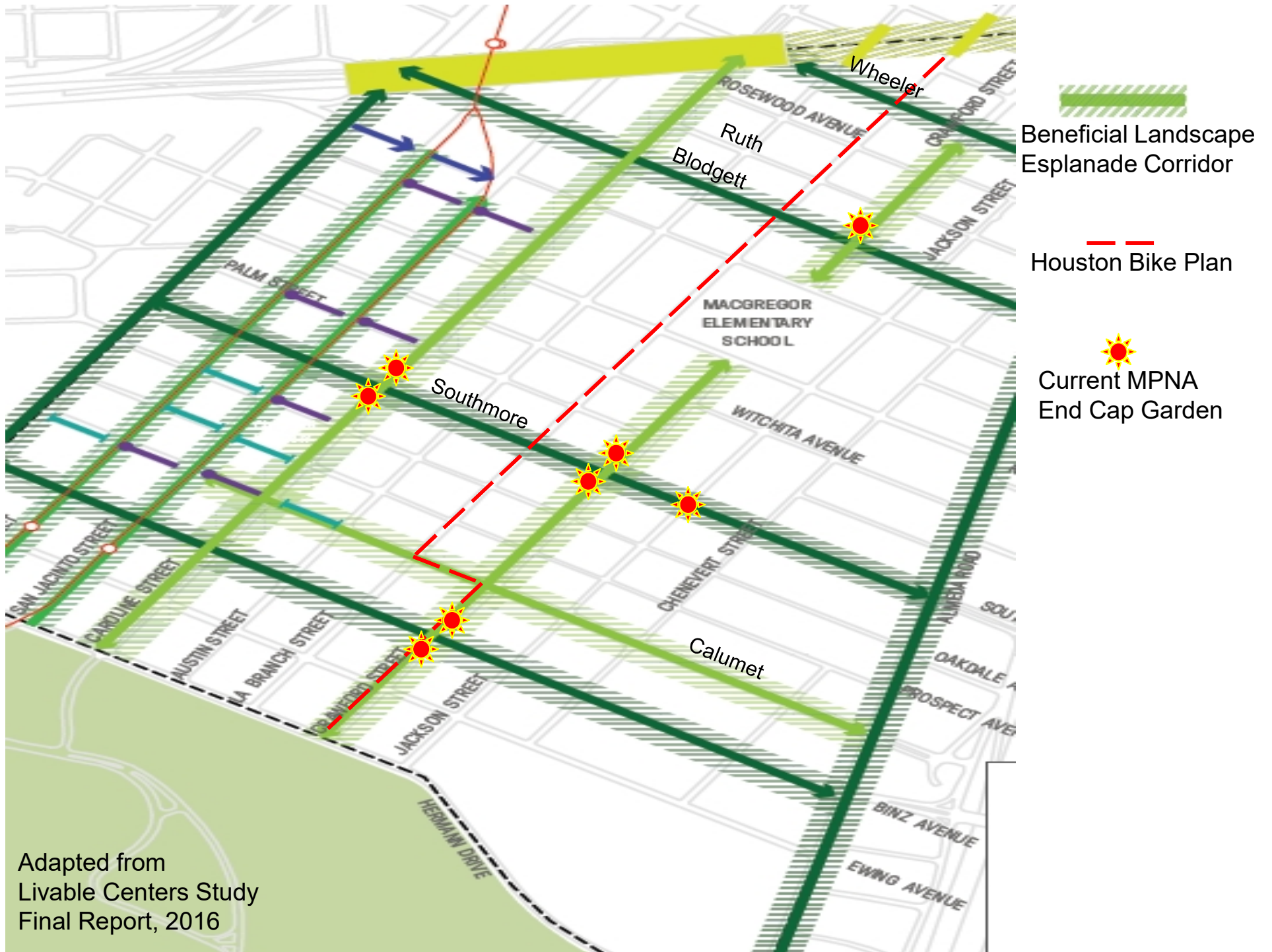
Museum Park Esplanade Enhancements



June 5, 2019

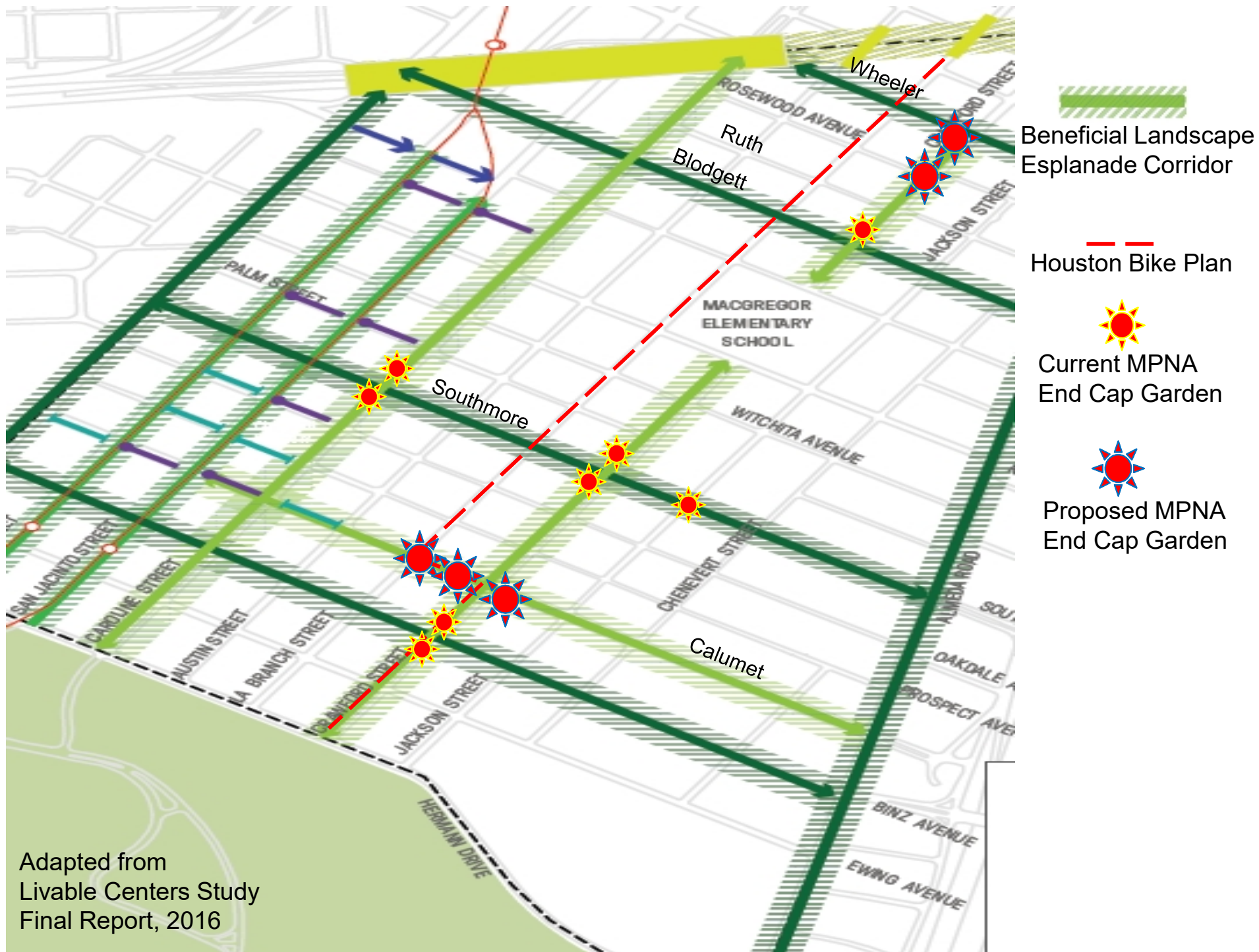
Overview

- New End Cap Garden Plan
- Pocket Prairie Pilot Project
- Funding and Timeline
- Questions



Current MPNA End Cap Garden





Proposed New End Cap Gardens

Location considerations:

- Balancing endcaps throughout the neighborhood
- Esplanades in poor condition
- Tree location

**Crawford &
Rosewood southside**



**Crawford &
Wheeler southside**



**Calumet &
Crawford eastside**



**Calumet &
Crawford westside**

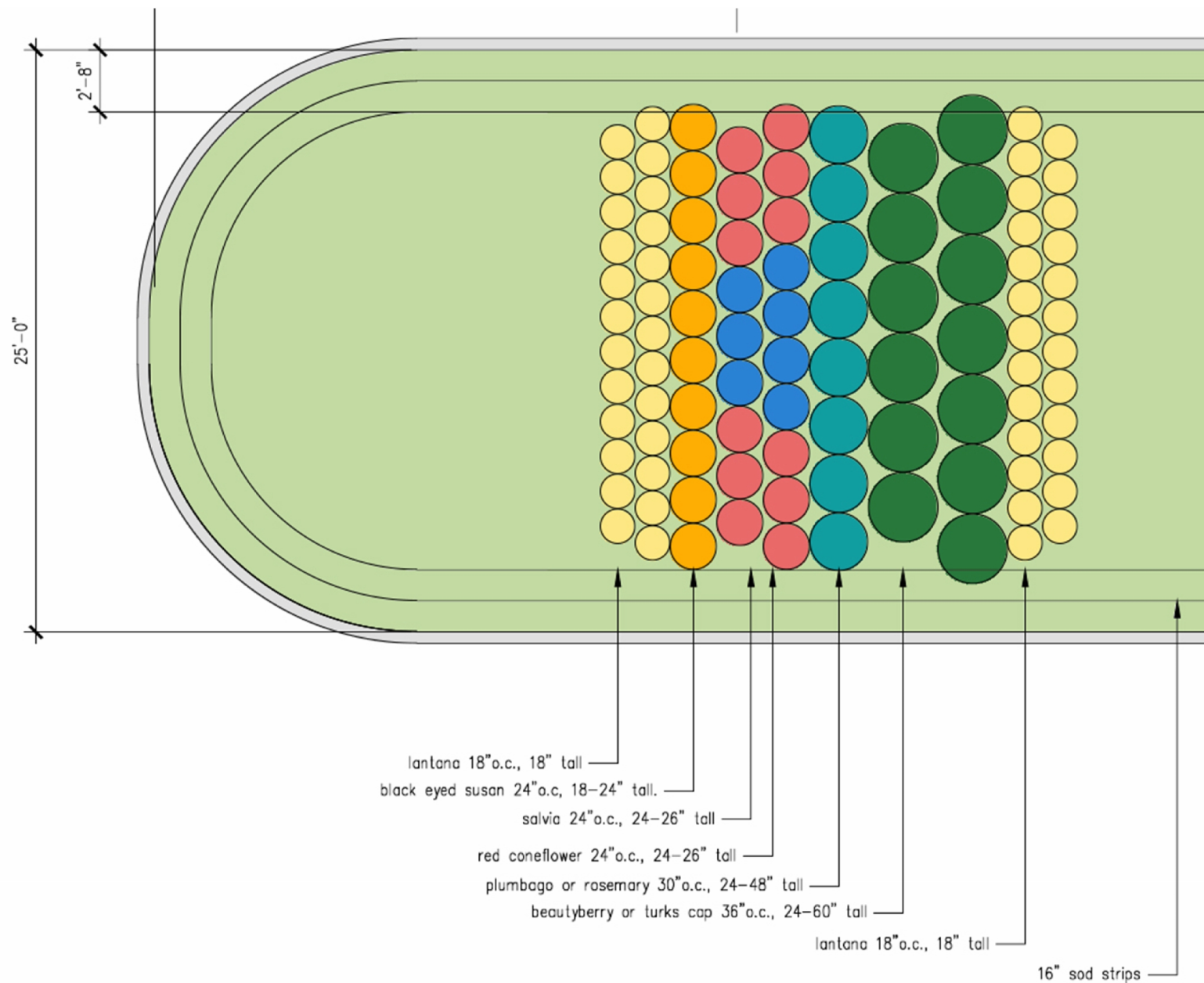


**Calumet &
LaBranch eastside**



6th location:
Need your input!

Endcap Garden Design from SWA



Overview

- New End Cap Garden Plan
- **Pocket Prairie Pilot Project**
- Funding and Timeline
- Questions

Livable Centers Study

“Green Grid”

Section 6.2: Beneficial Landscapes in Esplanades on Crawford, Caroline, Calumet and Southmore.

“Urban environments are disrupted ecologies which often require intensive resources to sustain themselves. Museum Park’s esplanades provide an **excellent canvas** to demonstrate the visual, social, environmental and economic returns available from beneficial landscape practices. While protecting the existing trees, it is recommended to infill the medians with **native plants (that will thrive in tough conditions, provide food/habitat, conserve water use, and filter and absorb stormwater run-off).**”

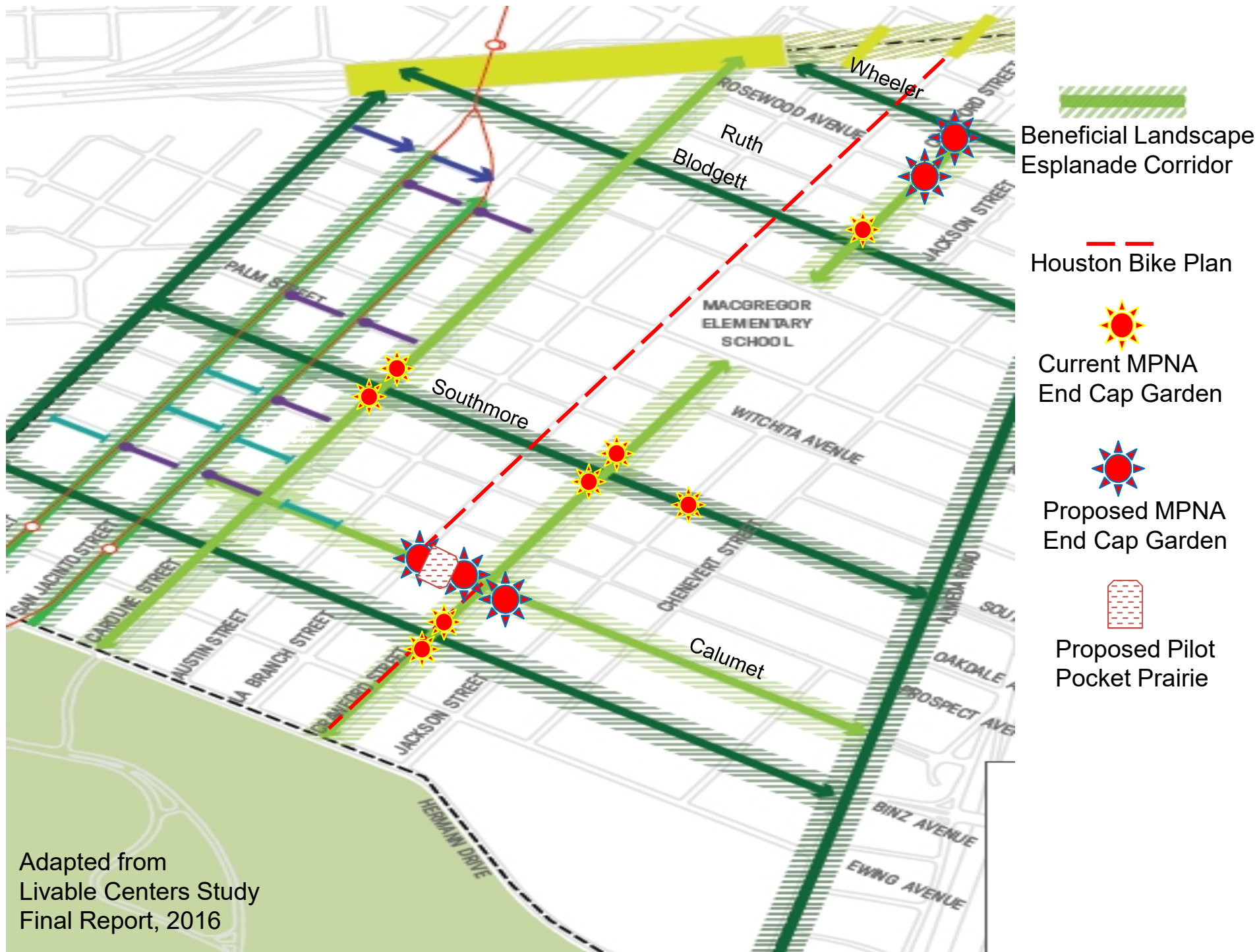
Example of Urban Pocket Prairie

Fannin and Holcombe

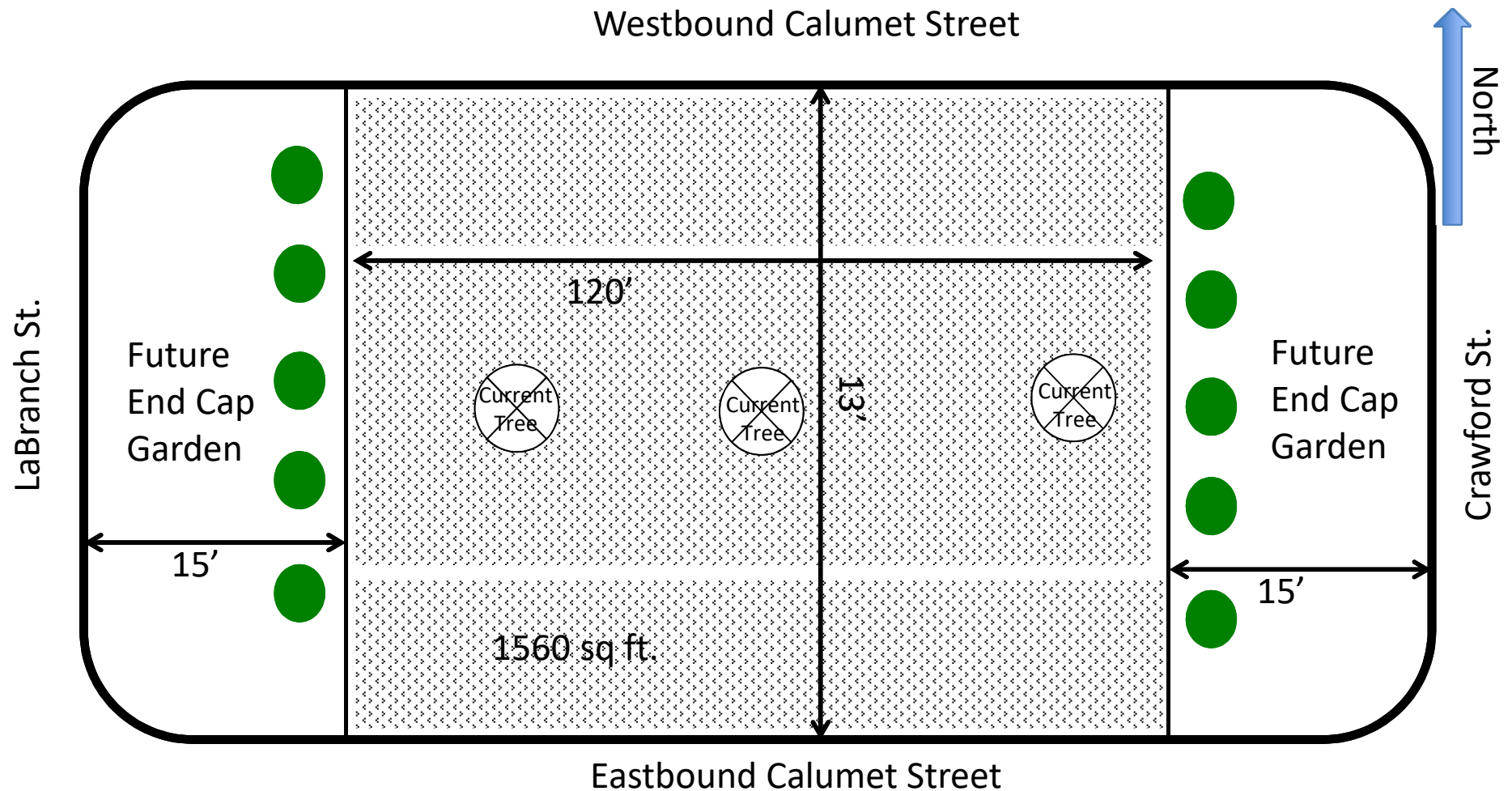


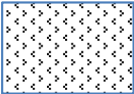
Texas native plantings





Initial Design of Pocket Prairie



 = Wildflower and Pollinator Plants up to 18" tall, Butterfly Retreat, Lady Bird Wildflower Mix, Black-eyed Susans, Indian Blanket

Overview

- New End Cap Garden Plan
- Pocket Prairie Pilot Project
- **Funding and Timeline**
- Questions

Proposed Budget

End Cap Gardens	Pilot Pocket Prairie
<ul style="list-style-type: none">• Solarization material: \$125• Soil: \$1,600• Plants: \$4,800• Equipment rental: \$250 Total: \$6,775	<ul style="list-style-type: none">• Solarization material: \$200• Seeds/Plants: \$300• Equipment rental: \$400 Total: \$900

Estimated Overall total: \$7,675

Estimated Dept of Neighborhoods Matching grant: -\$3,837

Estimated Final Cost to MPNA: **\$3,838**

Proposed Timeline

